

Information and floor plans

BODE-MUSEUM

MUSEUMSINSEL BERLIN

2

- 208-210
- France and the Netherlands – Late Gothic
- 211
- Spain
- 216
- James Simon Cabinet
- 212-219 | 221 | 222 | 223 | 225
- Germany and the Netherlands – Renaissance, Baroque
- 220 | 226 | 249 | 250
- lab.Bode – Education rooms
- 224
- Italy – Renaissance and Historicism
- 232
- The Making of Sculpture
- 233
- Merseburg Mirror Cabinet
- 234 | 235 | 237-240
- Italy – Small Bronzes
- 241 | 242-246
- Coins and Medals
- 252 | 254-256
- Germany and Austria – Baroque
- 257 | 258 | Small Dome
- Germany and France – Classicism
- 261
- Tiepolo-Cabinet

1

- 106 | 107 | 109
- Germany – Late Gothic
- 108
- Italy – Gothic
- 110 | 113-115
- Late Antiquity and Byzantium
- 111
- Germany and France – Gothic
- 121-125 | 128 | 129-132 | 134 | Basilika
- Italy – Renaissance, Baroque
- 139
- Medieval Treasury
- 141
- Gröningen Tribune
- Central and Southern Europe – Romanesque

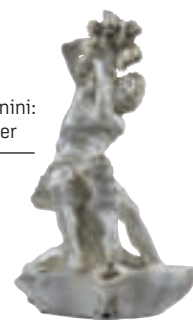
0

- 072 | 073
- Special exhibition room [temporarily closed]
- 038 Study room and Library
- [Entrance]
- Numismatic collection

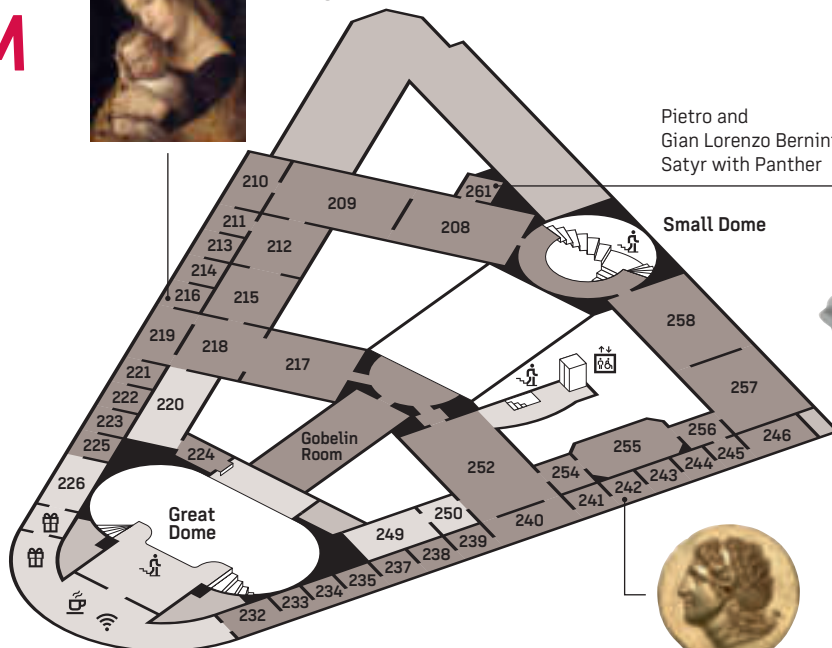
For the exhibition “The Second Glance: All Form of Love” that is integrated in the permanent collection please see the separate floor plan.



Andrea Mantegna:
Madonna with
Sleeping Child



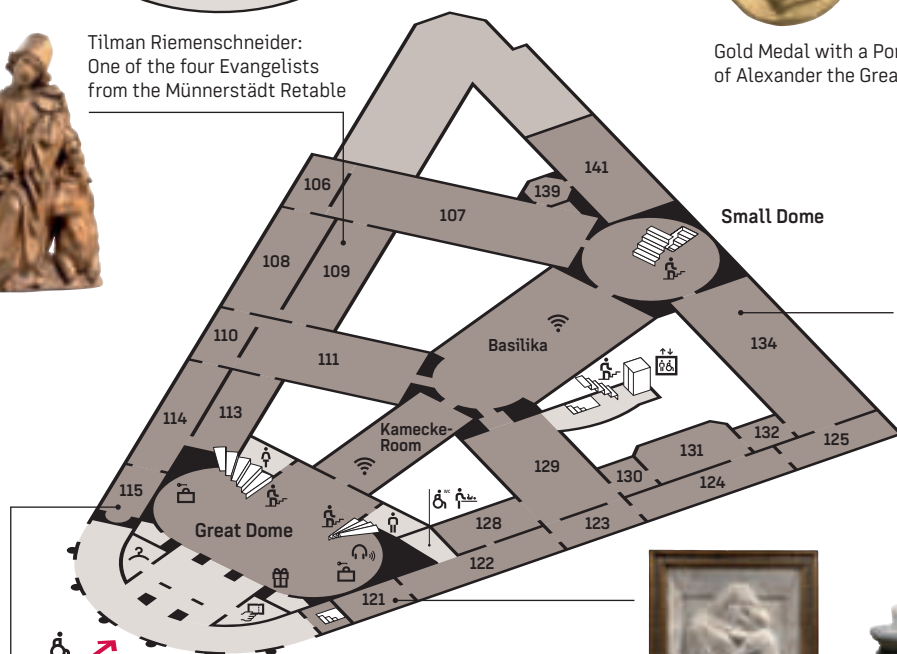
Pietro and
Gian Lorenzo Bernini:
Satyr with Panther



Gold Medal with a Portrait
of Alexander the Great



Tilman Riemenschneider:
One of the four Evangelists
from the Münnerstädt Retable



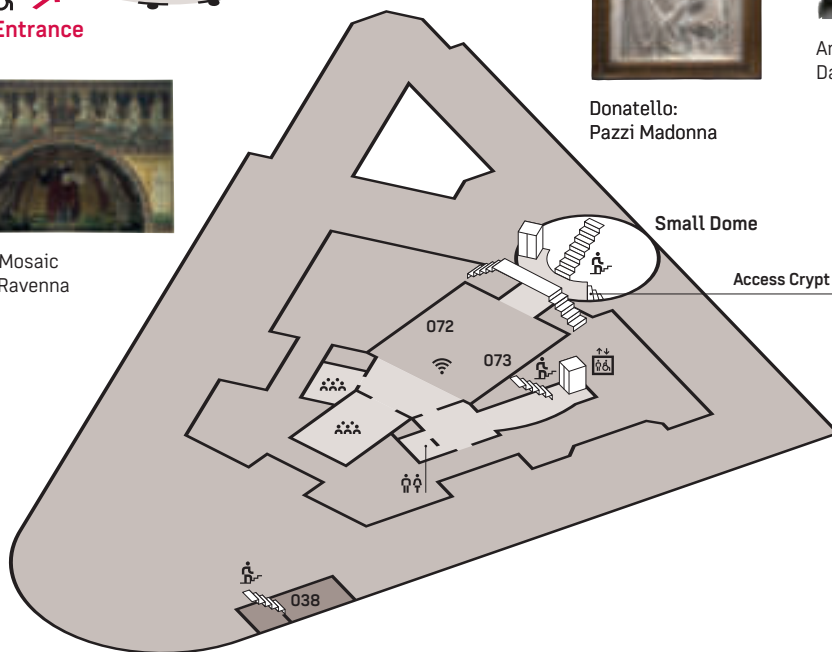
Antonio Canova:
Dancer



Apse Mosaic
from Ravenna



Donatello:
Pazzi Madonna





The Bode-Museum

The Kaiser-Friedrich-Museum (later Bode-Museum) was built at the tip of the Museumsinsel between 1897 and 1904. To create the impression of a museum rising from the water, architect Ernst Eberhard von Ihne's three-wing building hugs the bank of the island on two sides. The plans were largely the work of Wilhelm von Bode, at the time Director of the Gemäldegalerie [Gallery of Old Masters] and Skulpturensammlung [Sculpture Collection] and later Director General of the Royal Museums in Berlin. When it opened in 1904 the Kaiser-Friedrich-Museum was the first museum to display painting and sculpture on an equal footing. The building was severely damaged during the Second World War and reconstructed in stages from 1948 to 1986. In 1956 the museum was renamed in memory of its spiritual founder. Following the fall of the Wall and the reuniting of the Staatliche Museen zu Berlin [National Museums in Berlin] the museum was fully overhauled to reflect the needs of a modern museum and comply with requirements relating to the preservation of monuments.

The collections

The Bode-Museum accommodates a number of collections. Besides from the Skulpturensammlung und Museum für Byzantinische Kunst [Sculpture Collection and Museum of Byzantine Art] and Münzkabinett [Numismatic Collection] the museum also contains European sculptures and paintings from the Gemäldegalerie, now located at the Kulturforum. The Skulpturensammlung is one of the largest collections of sculpture in existence, encompassing works dating from the early Middle Ages to the late 18th century. The quality of the collection is reflected in works by such masters as Donatello, Tilman Riemenschneider and Antonio Canova. The Museum für Byzantinische Kunst contains a world-class collection of Late Antique and Byzantine art stretching from the 3rd to the 15th century. Encompassing to over half a million objects, the Münzkabinett ranks as one of the world's most important coin collections. The 4,000 coins and medallions exhibited in the Bode Museum chart the history of mankind from the beginnings of minting in the 7th century BC to the Euro of the present day.

Bode-Museum

Staatliche Museen zu Berlin
Museumsinsel Berlin
Visitor's entrance: Am Kupfergraben 1
[via Monbijoubrücke]
10117 Berlin

Tuesday – Sunday 10 am – 6 pm
Thursday until 8 pm, Monday closed
The permanent collection rooms
on the upper floor open from 11 am.
Ticket price includes audioguides
in several languages.

Avoid queueing for admission to any of the
museums or exhibitions: tickets available at
www.smb.museum

Information, advice, bookings

Monday – Friday 9 am – 4 pm
Tel. 030 – 266 42 42 42
service@smb.museum
www.smb.museum/bm

Events

www.smb.museum/veranstaltungen
Subject to alterations



Organisation
der Vereinten Nationen
für Bildung, Wissenschaft
und Kultur



Museumsinsel Berlin
Welterbestätte seit 1999

